



Data does not create meaning. We do!

Vantage defined:

a position giving a strategic advantage, commanding perspective, or comprehensive view

KIC Vantage™ is a factory level Industry 4.0 smart factory system for reflow and cure data management and analytics. It truly does give you the best vantage, gaining insight into your reflow and cure processes throughout the factory.

How does Vantage™ do all of this? By being a true Industry 4.0 system, with connected devices at each oven feeding data analytics to the Vantage™ database server on your factory network.

Actionable data anywhere, anytime

Access to everything that Vantage provides is right at your fingertips with its *browser based user interface*.

Anywhere you have access to a browser and connection to your factory network, you will instantly have *live updates* from your reflow and cure ovens.

Vantage Advantages

- Real-time process dashboard
- Automation
- MES connectivity
- Big data
- Data analytics
- Machine learning
- 2 Year Warranty
- 24 Hour World Class Customer Support

Status

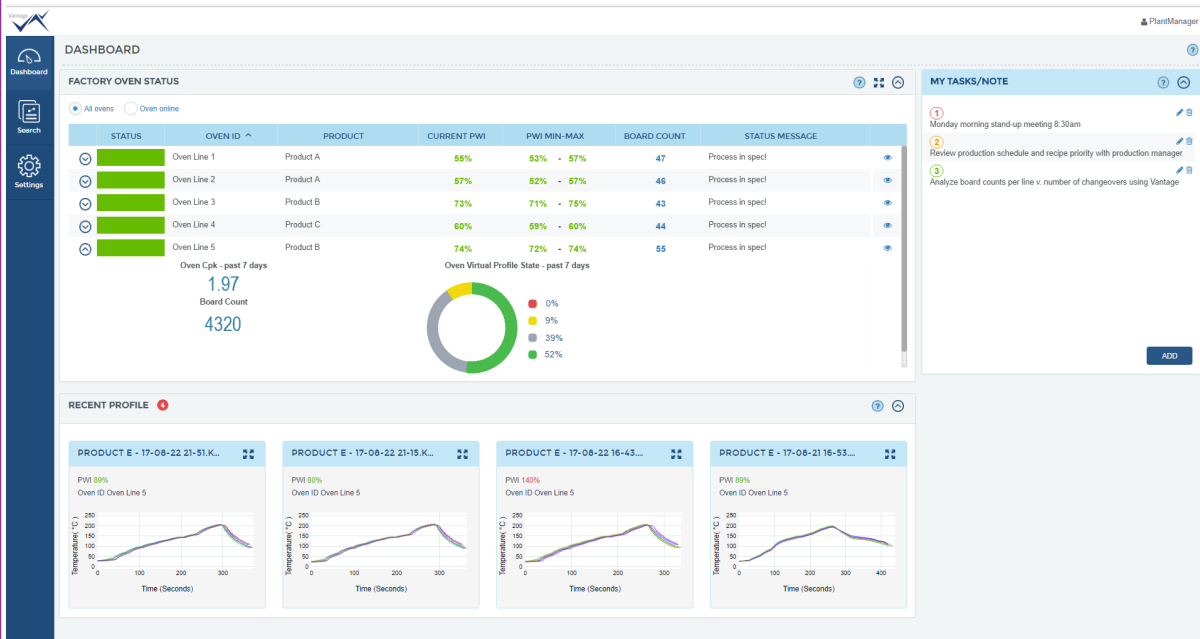
Line

Product

Process Verification

Board Count

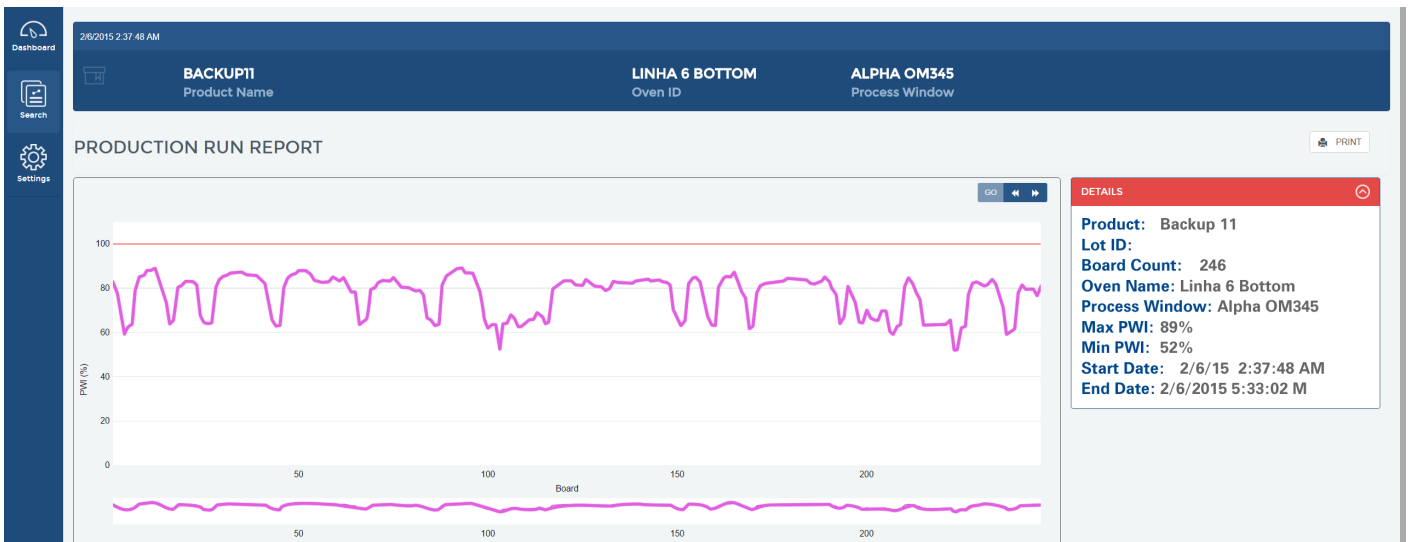
Live Dashboard



Industry 4.0
with
Vantage

Browser based means accessible on mobile devices as well as tablets, and smartphones (depending on network restrictions).

Vantage enables complete transparency and automated data collection; it streamlines reporting functions that were once tedious tasks taking up valuable time. Easily search and sort through all reflow and cure production data and generate reports on the precise information you need; *oven, customer, production run and more*. Create summary reports in PDF format and quickly send to your staff, supervisor or customer. *Reports for Profiles, Production Runs, Multiple Lot Run Summary and more*.



The Vantage system can connect with automated systems on your ovens AND shares data with other factory systems, such as MES. Production data and analytics are provided to MES for the best in automated process control and traceability.

VANTAGE SYSTEM COMPONENTS

- Vantage server: Windows 8.1 or 10 PC provided with Vantage.
- Vantage software: Comprised of MS SQL database built into the Vantage server software. Accessible via browser. Additional uploader application installed on each PC where profiling and automatic system devices are used.
- USB software key for licensing: users and options.



Corporate Headquarters

16120 West Bernardo Drive • San Diego, CA 92127 USA
 +1(858)673-6050 Phone • +1(858)673-0085 FAX
sales@kicmail.com • tech@kicmail.com

European Regional Office

europe.sales@kicmail.com • europe.tech@kicmail.com

Asian Regional Office

asia.sales@kicmail.com • asia.tech@kicmail.com
kicthermal.com kic.cn

All KIC products are designed to give maximum value and fast payback by streamlining your thermal process. Investment in a KIC product is a step toward total process control and quality management. All KIC products come with a no questions asked, 30-day money back guarantee.

Copyright © KIC. All rights reserved. Patents pending. **Specifications subject to change without notice.** KIC and KIC Thermal Profiling are divisions of and registered trademarks and tradenames of Embedded Designs Inc. Vantage, SPS, Smart Dock, X⁵, KIC Start², K², KIC Explorer, SlimKIC 2000, KIC 24/7, KIC 24/7 Wave, KIC Vision, KIC Navigator Power, KIC Auto-Focus, KIC Auto-Focus Power, KIC RPM, KIC Carrier, Wave Surfer, KIC MVP, RPI, Process Window Index, PWI, the Lead Free Capable symbol, KIC ON BOARD and the KIC logo are trademarks or registered trademarks of KIC. All other trademarks and tradenames are the property of their respective holders.